

Coonamble Sewage Treatment Plant – EPA Licence #4085

The [full license for the Coonamble Sewage Treatment Plant \(EPA # 4085\)](#) is available from the EPA website.

Licensee Name:

Coonamble Shire Council

Licensee Address:

80 Castlereagh Street, Coonamble NSW 2829

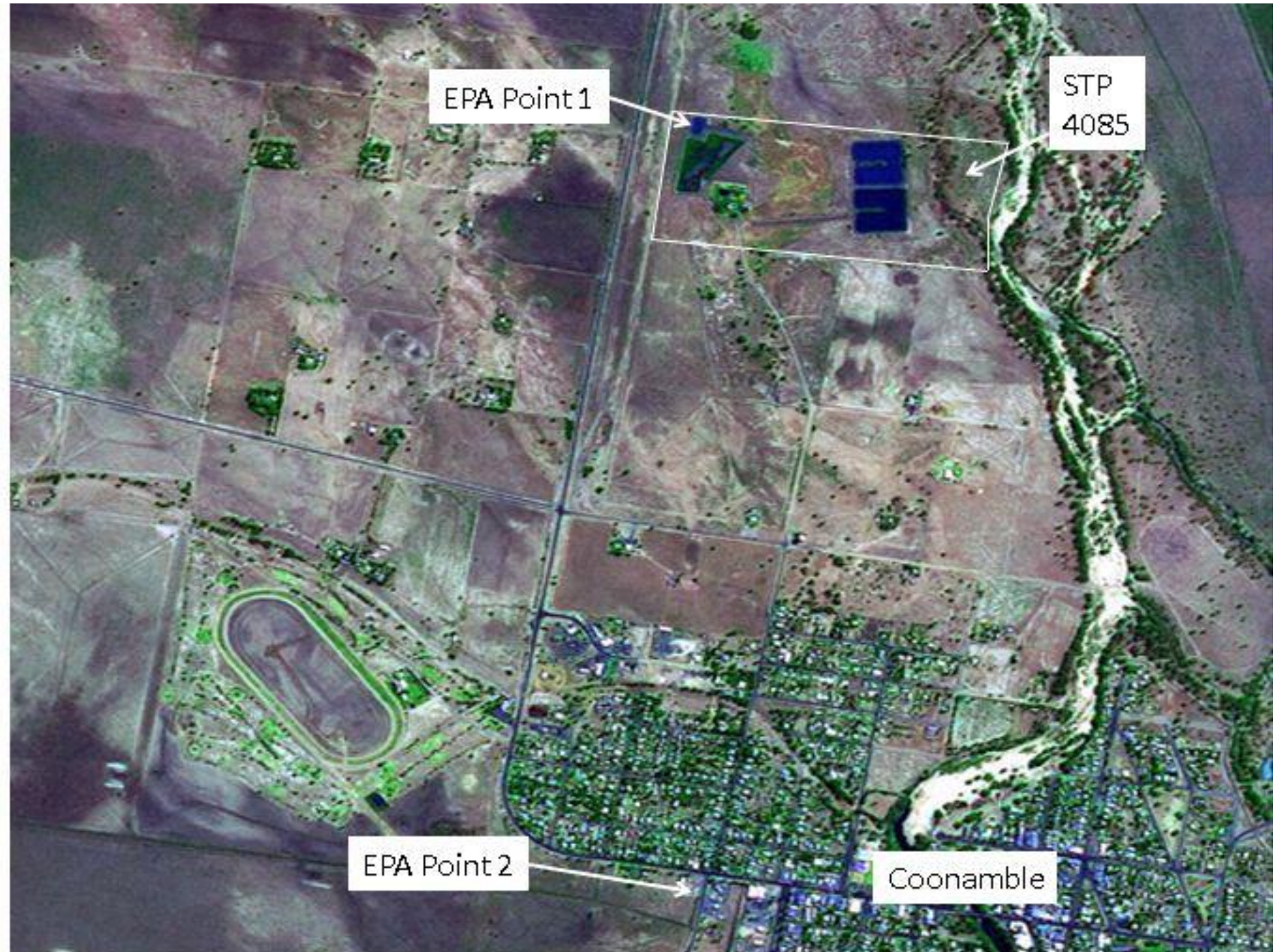
Coonamble STP Address:

Wingadee Street, Coonamble NSW 2829

Index

[Point 1](#)

[Point 2](#)



Coonamble Sewage Treatment Plant – Point 1

[Back to Index](#)

Coonamble Sewage Treatment Plant – Point 1

		Pollutant	pH	Total Suspended Solids	Biochemical Oxygen Demand	Oil & Grease	Total Nitrogen	Total Phosphorus	Faecal Coliforms	
		Limits Amount	6.5-8.5	50	20	10	20	10	N/A	
Sampled Date	Date Received	Date Published	pH	Total Suspended Solids	Biochemical Oxygen Demand	Oil & Grease	Total Nitrogen	Total Phosphorus	Faecal Coliforms	Comments
			pH Value	mg/L	mg/L	mg/L	mg/L	mg/L	CFU/100ml	
11-07-17	18-07-17	31/07/17	9.10	12	13	5	3.20	3.26	22	
08-08-17	16-08-17	23-08-17	8.99	33	4	5	3.30	2.99	38	
11-09-17	19-11-17	11-12-17	8.94	21	9	<5	3.90	3.62	10	
10-10-17	18-10-17	11-12-17	8.94	22	5	<5	4.30	3.38	~10000	
07-11-17	15-11-17	11-12-17	9.08	42	3	<5	3.50	3.38	5400	
05-12-17	12-12-17	18-01-18	9.22	47	25	<5	2.40	3.33	110	
09-01-18	18-01-17	18-01-18	9.27	35	4	<5	1.80	2.56	<2	
07-02-18	14-02-18	09-04-18	8.99	49	11	<5	2.2	2.21	27000	
12-03-18	20-03-18	09-04-18	9.39	44	11	<5	2.6	1.62	200	
10-04-18	18-04-18	13-06-18	9.50	50	8	<5	4.20	2.94	16	
08-05-18	15-05-18	13-06-18	9.47	60	8	<5	5.60	3.32	20	
04-06-18	13-06-18	13-06-18	9.24	73	22	<5	3.60	3.82	1200	
10-07-18	18-07-18	21-08-18	9.28	59	6	5	3.60	3.55	38	
13-08-18	20-08-18	21-08-18	9.32	95	10	<5	5.00	4.63	15	
11-09-18	18-09-18	19-10-18	9.43	94	25	5	5.1	3.93	~120	
08-10-18	15-10-18	19-10-18	8.5	74	19	<5	4.6	3.31	1600	
06-11-18	13-11-18	14-11-18	8.92	10	<2	<5	3.8	4.08	~22	
10-12-18	18-12-18	13-03-19	8.91	41	3	<5	3.3	0.87	52	
09-01-19	16-01-19	13-03-19	9.25	118	8	6	6.8	3.72	2	
12-02-19	20-02-19	13-03-19	9.44	28	6	<5	7	2.52	4	
05-03-19	12-03-19	13-03-19	9.36	60	3	<5	2.3	2.16	72	
16-04-19	17-04-19	22-10-19	9.37	66	6	<5	3.2	2.52	4	
14-05-19	15-05-19	22-10-19	9.29	41	4	<5	3.4	2.95	8	
18-06-19	19-06-19	22-10-19	9.12	18	3	<5	3.8	3.48	5	
02-07-19	03-07-19	22-10-19	9.19	11	3	<5	3.6	3.34	4	
06-08-19	07-08-19	22-10-19	9.05	14	6	<5	2.8	3.14	4	
23-09-19	24-09-19	22-10-19	8.91	17	4	<5	2.7	3.50	11	
15/10/19	16/10/19	24/10/19	8.74	23	<2	<5	2.7	3.06	60	
03/12/19	04/12/19	10/02/20	8.86	22	5	<5	1.9	3.56	40	
07/01/20	08/01/20	10/02/20	9.14	41	8	7	2.1	2.74	150	
25/02/20	05/03/20	04/08/20	9.11	39	5	<5	2.6	2.59	~34	
17/03/20	25/03/20	04/08/20	9.28	23	8	<5	2.2	2.65	~70	
21/04/20	28/04/20	04/08/20	9.25	26	<2	<5	1.6	2.6	1000	



[Back to Index](#)

Coonamble Sewage Treatment Plant – Point 2 - 2018

Date	Units	Monitoring Frequency Required	January (2018)	February	March	April	May	June	July	August	September	October	November	December (2018)	Comments
1	kL/day	Daily	809	638	664	580	626	606	579	600	737	678	540	675	
2	kL/day	Daily	529	629	578	572	558	628	552	622	555	663	563	571	
3	kL/day	Daily	639	560	829	750	624	579	597	590	481	347	680	495	
4	kL/day	Daily	649	598	741	503	642	590	595	590	762	550	571	527	
5	kL/day	Daily	623	688	505	604	584	824	597	596	444	595	619	603	
6	kL/day	Daily	548	631	669	605	614	468	570	660	625	605	598	726	
7	kL/day	Daily	693	600	641	608	600	502	633	586	619	628	544	419	
8	kL/day	Daily	647	633	636	662	646	598	634	632	597	548	919	564	
9	kL/day	Daily	597	597	664	614	633	730	482	593	618	625	642	610	
10	kL/day	Daily	596	577	664	602	629	733	520	613	596	749	568	588	
11	kL/day	Daily	653	646	639	645	636	454	580	678	599	364	659	638	
12	kL/day	Daily	659	588	893	603	753	569	552	570	596	706	555	516	
13	kL/day	Daily	651	596	418	591	651	761	533	629	584	556	577	640	
14	kL/day	Daily	598	616	659	662	415	464	651	466	690	564	6.6	532	
15	kL/day	Daily	625	608	636	591	633	637	514	613	505	597	593	689	
16	kL/day	Daily	663	711	721	676	742	590	523	583	586	552	588	388	
17	kL/day	Daily	645	485	620	527	623	588	601	593	488	663	606	727	
18	kL/day	Daily	577	713	700	589	586	569	551	805	591	547	580	475	
19	kL/day	Daily	765	523	638	591	664	657	586	437	638	551	560	640	
20	kL/day	Daily	392	628	776	551	541	573	564	534	681	551	562	506	
21	kL/day	Daily	553	652	1241	597	688	636	583	650	573	822	657	651	
22	kL/day	Daily	595	617	0	577	605	551	560	609	561	594	670	545	
23	kL/day	Daily	616	651	686	528	573	695	593	589	500	606	609	0	
24	kL/day	Daily	593	584	647	589	597	553	580	642	544	632	567	562	
25	kL/day	Daily	632	611	687	602	634	613	593	609	592	618	571	520	
26	kL/day	Daily	770	730	754	549	612	587	590	577	582	523	585	592	
27	kL/day	Daily	598	677	641	559	705	584	568	578	602	587	632	513	
28	kL/day	Daily	582	619	688	883	350	593	570	639	572	600	530	530	
29	kL/day	Daily	617		713	405	522	641	534	574	655	595	660	512	
30	kL/day	Daily	679		499	573	582	576	601	622	528	398	579	544	
31	kL/day	Daily	563		607		577		568	534		607		477	
Min Value	kL/day		392	485	0	405	350	454	482	437	444	347	6.6	0	
Max Value	kL/day		809	730	1241	883	753	824	651	805	762	822	919	727	
Mean	kL/day		624.39	621.64	659.81	599.60	607.90	604.97	572.71	600.42	590.03	587.77	586.35	547.58	
Date Published	05/08/20														



Coonamble Sewage Treatment Plant – Point 2 - 2019

Date	Units	Monitoring Frequency Required	January (2019)	February	March	April	May	June	July	August	September	October	November	December (2019)	Comments
1	kL/day	Daily	541	529	603	615	578	485	529	532	522	428	680	727	
2	kL/day	Daily	468	551	643	628	538	602	586	538	507	512	539	254	
3	kL/day	Daily	514	629	590	607	523	274	608	746	537	627	565	787	
4	kL/day	Daily	571	502	460	748	842	802	575	604	663	412	1127	566	
5	kL/day	Daily	561	556	584	486	487	614	572	283	467	592	587	378	
6	kL/day	Daily	572	611	572	619	501	487	776	559	532	597	556	758	
7	kL/day	Daily	485	591	546	589	558	584	652	628	521	4285	549	449	
8	kL/day	Daily	559	562	577	564	561	668	316	514	528	363	544	494	
9	kL/day	Daily	476	615	592	602	580	866	897	601	566	512	538	544	
10	kL/day	Daily	555	596	554	805	531	382	577	523	602	502	732	503	
11	kL/day	Daily	504	536	510	421	662	576	385	538	509	614	403	544	
12	kL/day	Daily	552	583	563	571	377	546	696	530	782	590	443	540	
13	kL/day	Daily	500	586	526	586	543	598	513	631	370	439	521	535	
14	kL/day	Daily	534	585	683	789	530	539	521	595	478	587	535	750	
15	kL/day	Daily	451	596	468	489	555	591	508	508	539	308	502	596	
16	kL/day	Daily	525	724	539	522	553	513	517	222	554	499	568	375	
17	kL/day	Daily	529	477	696	613	530	513	555	976	557	518	735	530	
18	kL/day	Daily	516	885	406	610	530	581	501	625	521	513	185	557	
19	kL/day	Daily	595	429	626	566	534	587	540	496	600	535	553	741	
20	kL/day	Daily	522	508	564	303	521	542	753	876	523	537	0	360	
21	kL/day	Daily	372	605	795	615	512	567	577	547	503	563	992	726	
22	kL/day	Daily	570	557	365	262	528	608	309	702	527	551	557	247	
23	kL/day	Daily	549	559	557	310	536	539	582	439	577	450	645	479	
24	kL/day	Daily	637	579	622	267	541	497	532	692	545	514	605	601	
25	kL/day	Daily	573	576	624	1129	567	562	552	67	541	559	551	519	
26	kL/day	Daily	509	627	666	515	402	560	520	1049	561	496	520	571	
27	kL/day	Daily	533	569	501	608	466	620	627	327	565	530	654	505	
28	kL/day	Daily	506	631	599	466	576	608	516	625	641	444	486	682	
29	kL/day	Daily	481		601	550	523	651	452	575	471	624	549	374	
30	kL/day	Daily	518		2171	569	536	569	534	557	517	397	700	471	
31	kL/day	Daily	559		989		546		567	1216		539		520	
Min Value	kL/day		372	429	365	262	377	274	309	67	370	308	0	247	
Max Value	kL/day		637	885	2171	1129	842	866	897	1216	782	4285	1127	787	
Mean	kL/day		527.00	584.07	638.45	567.47	540.87	571.03	559.52	591.00	544.20	633.45	570.70	538.16	
Date Published	05/08/20														

Coonamble Sewage Treatment Plant – Point 2 - 2020

Date	Units	Monitoring Frequency Required	January (2020)	February	March	April	May	June	July	August	September	October	November	December (2020)	Comments
1	kL/day	Daily	0	654	675	742	610	455	566	598	850	773	653		
2	kL/day	Daily	991	511	528	558	591	545	604	659	411	704	480		
3	kL/day	Daily	456	471	655	0	494	580	562	176	503	741	622		
4	kL/day	Daily	569	453	602	1907	575	546	683	743	630	511	692		
5	kL/day	Daily	566	507	648	750	584	547	478	613	569	557	539		
6	kL/day	Daily	583	807	2351	667	712	545	408	616	466	476	601		
7	kL/day	Daily	408	648	714	587	434	522	675	568	769	565	675		
8	kL/day	Daily	546	555	621	583	762	535	306	807	469	674	689		
9	kL/day	Daily	570	532	597	573	404	811	824	624	666	449	752		
10	kL/day	Daily	534	549	660	1832	565	332	581	528	631	652	395		
11	kL/day	Daily	788	909	642	2128	572	589	972	600	579	694	624		
12	kL/day	Daily	440	437	620	667	528	614	625	589	595	498	606		
13	kL/day	Daily	359	556	600	416	563	755	463	581	461	478	616		
14	kL/day	Daily	615	701	743	592	553	720	606	601	775	535	874		
15	kL/day	Daily	558	502	643	595	620	544	577	630	512	573	654		
16	kL/day	Daily	0	513	565	593	511	606	559	436	440	567	631		
17	kL/day	Daily	610	640	541	567	553	536	608	576	786	646	619		
18	kL/day	Daily	737	975	753	623	528	563	561	736	458	632	652		
19	kL/day	Daily	459	1873	470	575	558	702	731	408	585	596	629		
20	kL/day	Daily	483	541	673	512	520	588	394	756	752	643	616		
21	kL/day	Daily	537	904	645	554	538	771	560	565	563	614	694		
22	kL/day	Daily	540	0	601	571	606	564	563	593	651	702	776		
23	kL/day	Daily	505	645	424	452	1695	557	596	692	594	576	600		
24	kL/day	Daily	541	588	593	543	10.8	576	564	438	570	1120	590		
25	kL/day	Daily	734	622	620	635	664	596	695	553	579	1171	462		
26	kL/day	Daily	552	593	845	536	702	587	719	554	616	530	610		
27	kL/day	Daily	361	617	648	585	591	695	506	561	866	716			
28	kL/day	Daily	472	590	710	425	426	572	565	559	321	470			
29	kL/day	Daily	525	646	622	552	727	528	560	586	699	563			
30	kL/day	Daily	530		671	585	608	581	564	802	469	638			
31	kL/day	Daily	467				559		570	343		653			
Min Value	kL/day		0	0	424	0	10.8	332	306	176	321	449	395		
Max Value	kL/day		991	1873	2351	2128	1695	811	972	807	866	1171	874		
Mean	kL/day		517.29	639.28	689.33	696.83	592.38	588.73	588.55	583.58	594.50	636.03	628.88		
Date Published	1/12/20														

